

COBOT HC30PL

Human-Collaborative Robot 6 integrated Sensors

The MOTOMAN HC30PL is the largest cobot of the HC product family, with a remarkable payload of 30 kg, a maximum reach of 1,700 mm and outstanding repeatability. The cobot is available in two specifications: for payloads of 20 kg or less and for payloads between 20–30 kg. This makes the cobot an ideal choice for fenceless palletizing tasks, such as in end-of-line packaging applications. The food-grade grease also opens up further applications in the food and pharmaceutical industries. Due to the integrated torque sensors, the cobot can be used in human-robot collaboration without any protection fence. Plug&Play installation of grippers is facilitated by the ISO flange and configuration wizards on the Smart Pendant.

The MOTOMAN HC cobot series from Yaskawa was developed for easy entry into robotic automation. Besides the easy programming philosophy with hand guiding and direct teach buttons on the cobot's wrist, online tutorials and the application builder assists you in your robot automation journey. The convenient tablet-based Smart Pendant guides you intuitively through the individual steps – from programming to safety configuration, simple menus provide the perfect overview of your application. Simply set up the cobot, connect the manipulator with controller and peripherals, and you are ready to start programming. Various compatible and Plug&Play products – supplied by Yaskawa or partners of the Yaskawa Ecosystem – enable a fast and easy cobot installation in different application fields.



www.yaskawa.eu

Controlled by
YRC1000

Controlled by
**YRC1000
micro**

KEY BENEFITS

Easy-to-use

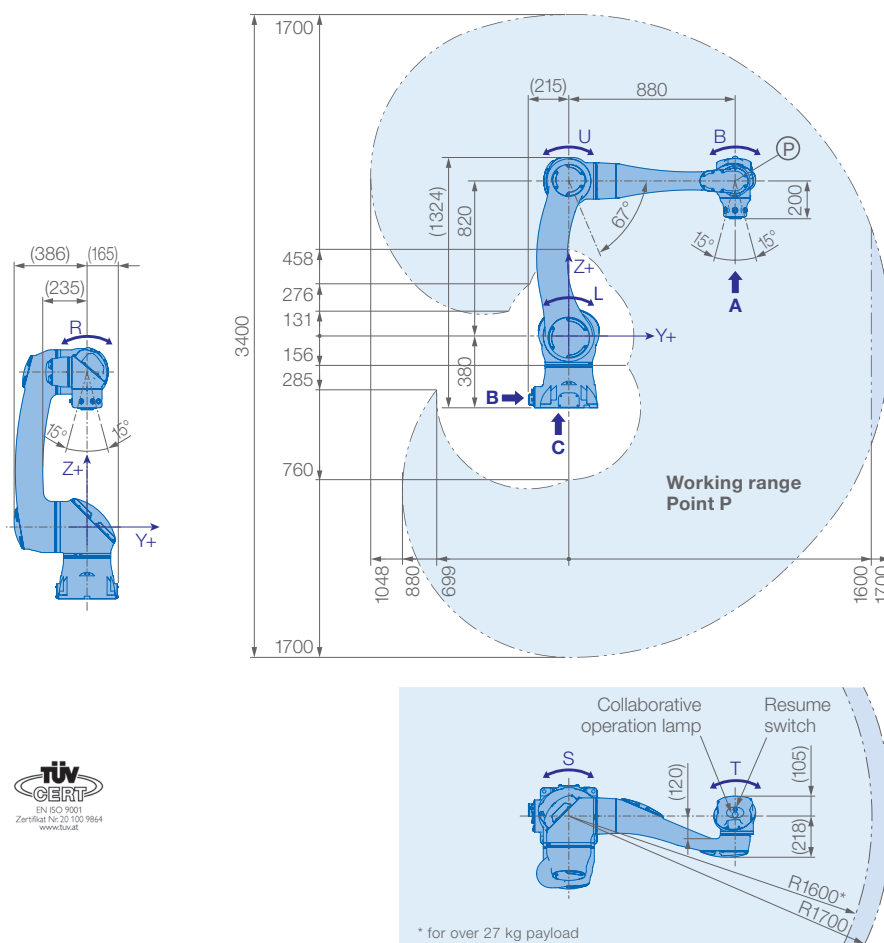
- Simple programming with Smart Pendant incl. Smart Frame and hand guiding
- Complex programming with Teach Pendant
- Pendants with standard 3-position enabling switch
- Wizard programming for applications and accessories
- Ecosystem of Plug&Play partner products
- ISO flange for easy connection of accessories
- Yaskawa simulation software MotoSim EG VRC

Smart safety

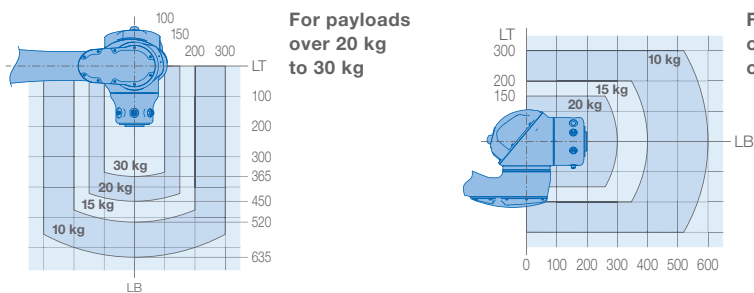
- PL d Cat. 3 certification with 25 safety-related hardware and software functions
- High-resolution torque sensors in each joint
- Easy configuration of the safety unit, such as definition of ranges, plains and precise envelopes for manipulator and gripper
- Two retract movements: Retract & Clamp Release function
- Pushback function for pushing the cobot away during operation

Industrial design for hybrid operation

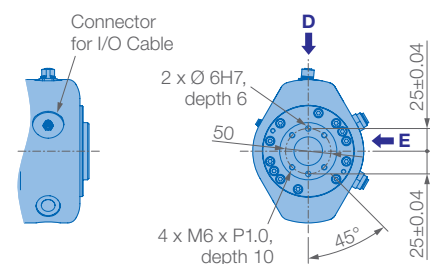
- High payload and reach
- IP67 protection class with high-quality seals
- Food grade grease
- Robust aluminium cast in lightweight design
- Powerful Yaskawa 200 V servo drives
- Internal media routing
- Automatic calibration possible
- High speeds of up to 2,000 m/s
- Industrial control options YRC1000 and YRC1000micro



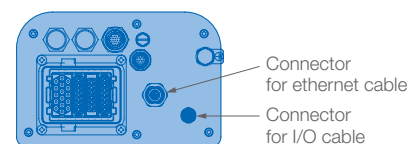
Allowable wrist load



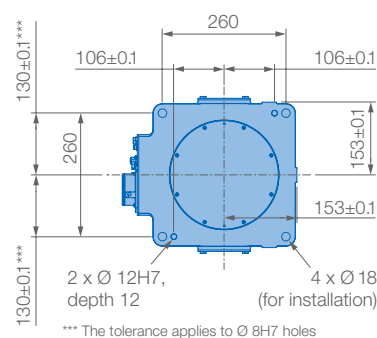
View A



View B

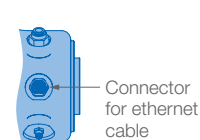


View C

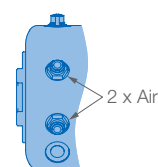


Mounting options: Floor
IP Protection: IP67

View D



View E



Specifications HC30PL

Axes	Maximum motion range [°]		Maximum speed [°/s]		Allowable moment of inertia [kg · m²]		Controlled axes	6
	≤ 20 kg	> 20–30 kg	≤ 20 kg	> 20–30 kg	≤ 20 kg	> 20–30 kg	Max. payload [kg]	
S	±210	±210	80	80	–	–	Repeatability [mm]	±0.05
L	±180	+180/–154	80	80	–	–	Max. working range R [mm]	1700 / 1600*
U	+247/–67	+247/–67	120	120	–	–	Temperature [°C]	0 to +40
R	±210	±15	130	112	4,0	4,0	Humidity [%]	20 – 80
B	+270/–90	±15	180	132	4,0	4,0	Weight [kg]	140
T	±210	±210	180	180	2,0	2,0	Power supply, average [kVA]	1.5

* for over 27 kg payload

Robotics Division

YASKAWA Europe GmbH
Yaskawastraße 1
85391 Allershausen, Germany
Tel. +49 (0) 8166/90-0
Fax +49 (0) 8166/90-103
robotics@yaskawa.eu
www.yaskawa.eu

YASKAWA Headquarters Academy and Sales Office

YASKAWA Europe GmbH
Philipp-Reis-Straße 6
65795 Hattersheim am Main, Germany
Tel. +49 (0) 6196/77725-0
Fax +49 (0) 6196/77725-39

All drawing dimensions in mm. Technical data may be subject to change without previous notice. Please request detailed drawings at robotics@yaskawa.eu.
YR-1-06VXCP30-B00
C-01-2026, A-No. 223447

YASKAWA