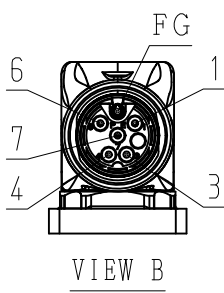


DWG. NO. 900-180-726

**RoHS** **CE**

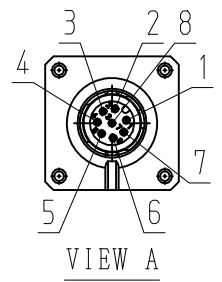
MOTOR TERMINAL CONNECTION

1	-
3	PHASE U
4	PHASE V
6	-
7	PHASE W
FG	FRAME GROUND
CON. CASE	FRAME GROUND

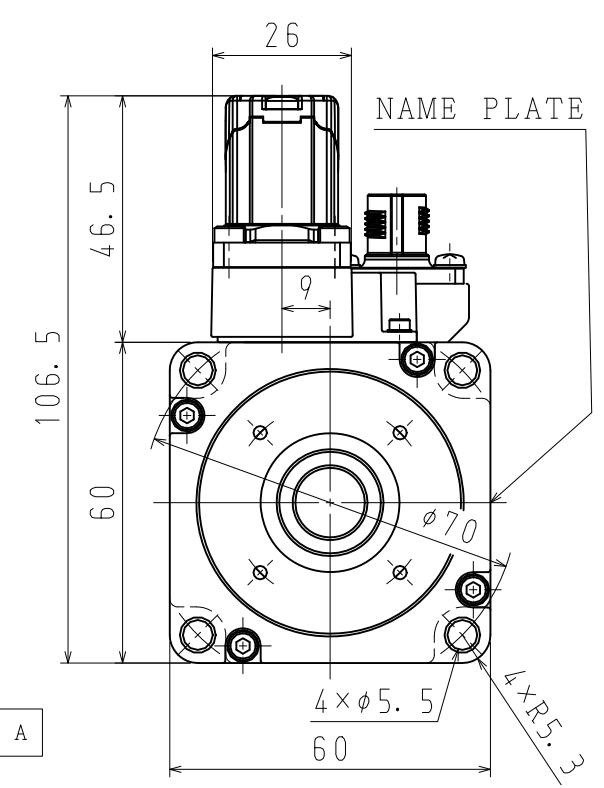
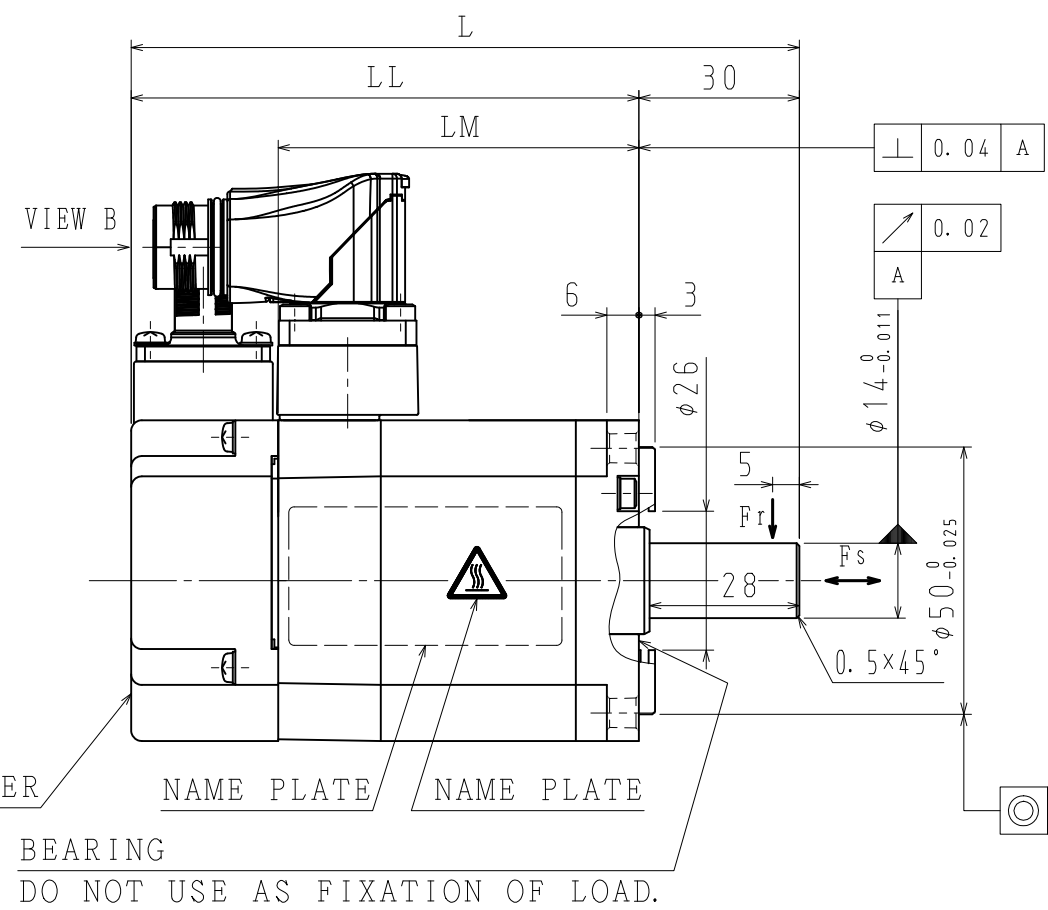
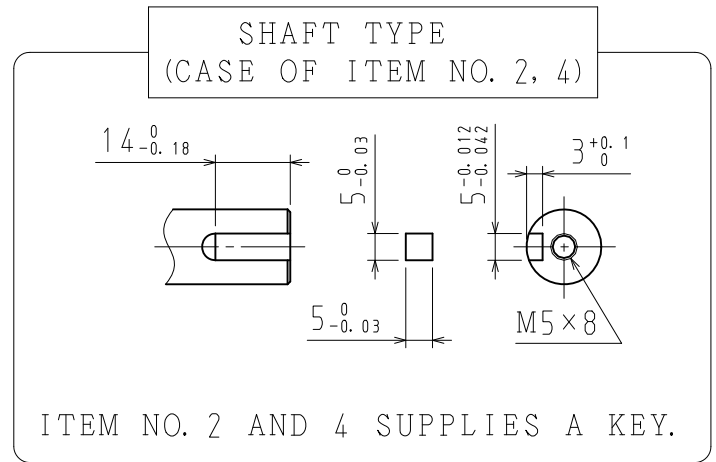
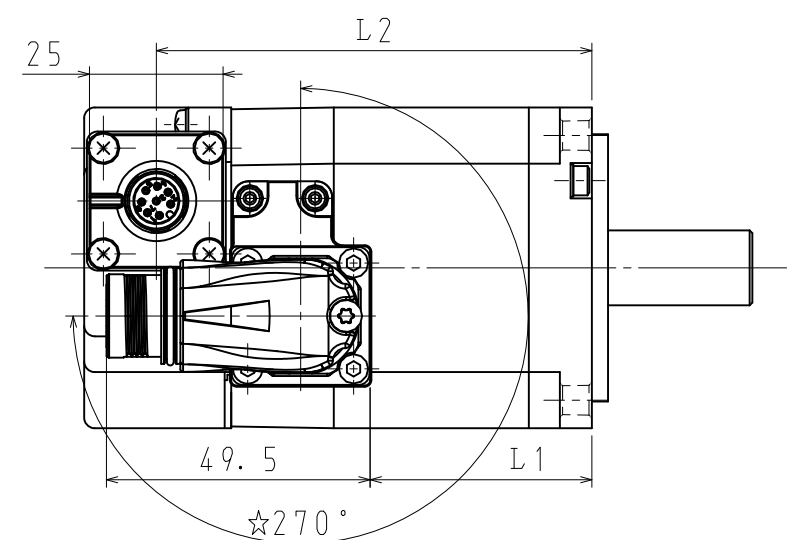
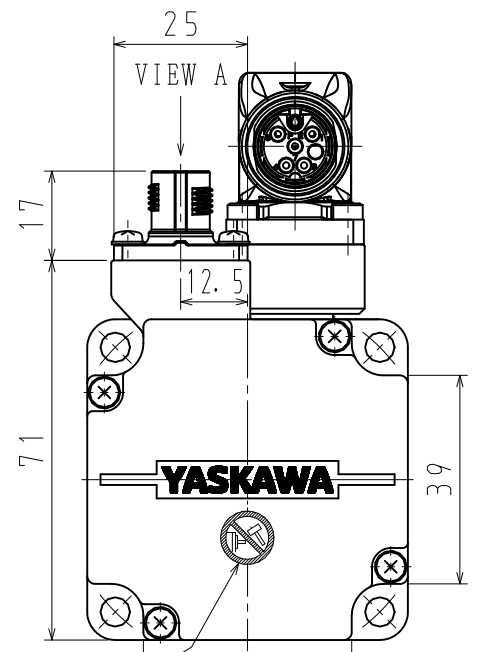


ENCODER TERMINAL CONNECTION

1	PG5V
2	PG0V
3	FRAME GROUND
4	BAT (+)
5	BAT (-)
6	DATA (+)
7	DATA (-)
8	-
CON. CASE	FRAME GROUND



RECEPTACLE SIZE:M17  
HOUSING:ST-5EP1N8AA500S  
MAKER:PHOENIX CONTACT



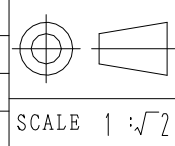
NOTES

1. ALL DIMENSIONS ARE IN MILLIMETERS.
2. MOTOR SPECIFICATIONS :900-172-604
3. ENCODER SPECIFICATIONS:900-172-501 (24BIT ABSOLUTE)
4. VIBRATION:15μm OR BELOW AT RATED SPEED.
5. MOTOR CABLE AND ENCODER CABLE ARE OPTIONAL.
6. READ AND UNDERSTAND DOCUMENT PACKED WITH MOTOR (SAFETY PRECAUTIONS), AND BE CAREFUL USING MOTOR.
7. DEGREES OF PROTECTION:IP67 EXCEPT FOR SHAFT OPENING. MUST USE SPECIFIED CONNECTORS FOR MOTOR.
8. AT THE TIME OF DELIVERY OF MOTOR, EACH OF CONNECTORS ARE ATTACHED PROTECTIVE PARTS. PLEASE REMOVE THEM BEFORE ATTACHING CABLES.

9. DO NOT TOUCH EACH OF CONNECTOR PINS DIRECTLY. IT CAUSES FAILURE.
10. MOTOR CONNECTOR COULD BE TURNED IN THE RANGE OF ☆ WITHIN 10 TIMES.

ITEM NO.	TYPE	SHAFT TYPE	L (mm)	LL (mm)	LM (mm)	L 1 (mm)	L 2 (mm)	RATED OUTPUT (W)	RATED TORQUE (N・m)	TIME RATING	RATED SPEED (min <sup>-1</sup> )	VOLTAGE (Vrms)	RATED CURRENT (Arms)	THERMAL CLASS	WEIGHT (kg)	ALLOWABLE RADIAL LOAD Fr (N)	ALLOWABLE THRUST LOAD Fs (N)
1	SGM7A-02D7F21	STRAIGHT	108.5	78.5	51.2	25	65	200	0.637	CONT.	3000	400 (3PHASE)	1.2	B	0.9	245	74
2	SGM7A-02D7F61	KEY+TAP											1.2				
3	SGM7A-04D7F21	STRAIGHT	125	95	67.2	41.5	81.5	400	1.27				1.2				
4	SGM7A-04D7F61	KEY+TAP															

DRWN.	S. KAMIJO	TITLE	AC SERVOMOTOR Σ-7 SERIES	DRWN. DATE	JUN. 06, '15	REV.	
CHKD.	T. HIROSE			DWG. NO.	900-180-726		
APRV.	K. AOKI		SGM7A MODEL 200, 400W				



**YASKAWA**

SIZE A3